

Examples of Protein Electrophoretograms

Figure 1. Representative electrophoretogram. The dark horizontal lines from left to right denote the breaks between the albumin (A), Alpha globulins (B), Beta globulins (C), and Gamma globulin fractions (D).

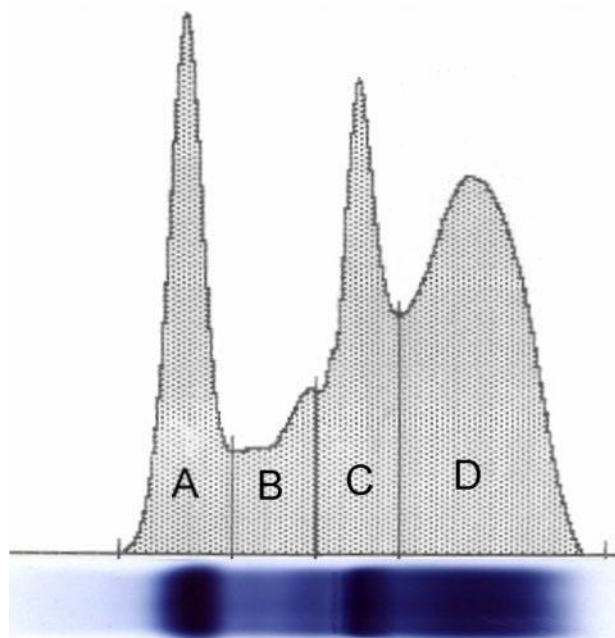


Figure 2. Plasma protein electrophoretogram with beta-gamma bridging. Albumin (A) and alpha globulin (B) fractions are present. Note the absence of a spike in the beta globulin region and a lack of a break between beta and gamma globulins (C).

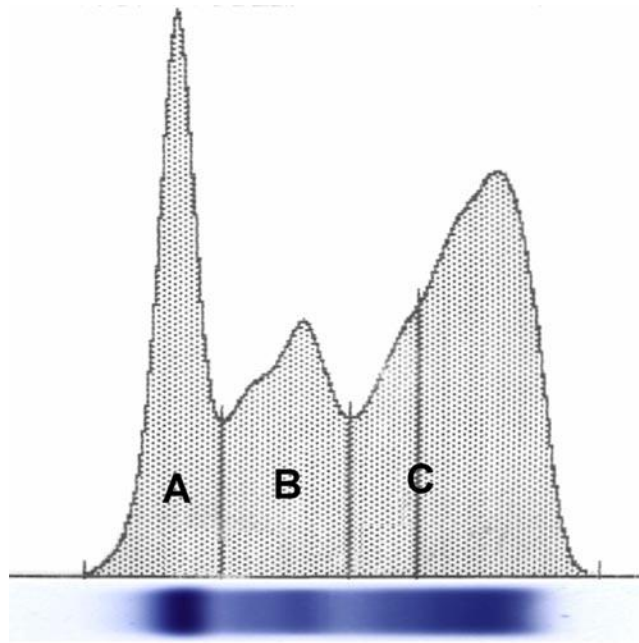


Figure 3. Plasma protein electrophoretogram of the loggerhead sea turtle, *Caretta caretta* (adult male) with pre-albumin (P) band. The albumin (A), alpha globulin (B), beta globulin (C), and gamma globulin (D) fractions are present.

